

# *Wombourne Horse Shows*



## ***Open Shows - 2018***

**Dressage - Showjumping - In Hand & Ridden Showing  
Mini Working Hunter - Novice Showing Ring - Gymkhana**

Sunday 29th April (VHS Qualifiers, Monday 28th May (Medal Show & TSR Qualifiers)  
Sunday 17th June (Sash Show)

Sundays 15th July (TSRQualiers) & 29th July (TGCA Qualifiers)

Sunday 12th August & Bank Holiday Monday 27th August (Double Points)

Dog Shows - all shows except 29th April

**Wood Farm, Gospel End Road, Sedgley DY3 4HA**

*By kind permission Mrs P Daniel*

*Follow us on Facebook - Wombourne Horse*





# Four Paws Pet Services

**PET TAXI - VET VISITS / GROOMING / RELOCATING**

**DELIVERY AND COLLECTION THROUGHOUT THE UK**

Telephone : 07971 108463 or 07734 000260

e-mail: [pat.shear@yahoo.co.uk](mailto:pat.shear@yahoo.co.uk)

*Fully Insured - Defra Authorized*

Follow us on facebook - Four Paws Pet Services



## Wood Farm Riding School

**Horse Riding Lessons  
&  
Pony Club Centre**



Find us at  
Gospel End Road  
Sedgley DY3 4HA

Call Stacy 07580978406

Pat: 07802927560

E-Mail: [woodfarmrs@hotmail.co.uk](mailto:woodfarmrs@hotmail.co.uk)

Follow us on Facebook Wood Farm Riding School



## **SHOW SECRETARY**

1 Ivy Cottages, Penncroft Lane, Wolverhampton WV4 5JW  
Telephone: 01902 677593      Mobile: 07927 059930 (show days only)  
E-mail: wombourne@hotmail.com      www.midarc.co.uk/wombourne.htm

## **OPEN SHOWS 2018**

Sunday 29th April, Monday 28th May (Medal Show), Sunday 17th June (Sash Show)  
Sundays 15th July, 29th July, 12th August, Bank Holiday Monday 27th August (Double Points)  
Wednesday Evening - 30th May

## **MEMBERSHIP**

Junior & Senior Membership : £12 per annum  
Ages taken from 1st January 2018 - Juniors are 16yrs & under on that date  
Membership Forms may be downloaded from [www.midarc.co.uk/wombourne.htm](http://www.midarc.co.uk/wombourne.htm)  
Rosettes to 6th place in all classes  
For 2018 there will be a Dog Show membership at £6 per Adult or Child

## **POINTS FOR END OF SEASON AWARDS ARE AWARDED TO MEMBERS ONLY**

Awards will be presented at the Annual Awards Evening on 20th October 2018

## **POINTS WILL BE AWARDED PER CLASS AS FOLLOWS**

1st - 15pts   2nd - 12pts   3rd - 10pts   4th - 8pts   5th - 6pts   6th - 4pts

## **FIRST AID**

A Charge of £1 per day per competitor will be made to help cover First Aid

## **INSURANCE**

All events are fully covered by Public and Employers liability.  
However, we strongly advise that all competitors should be adequately covered for Personal Accident & Injury, and their horses or ponies covered for public liability

## **IMPORTANT**

Entering a class at Wombourne Horse Shows implies that you have accepted our terms and conditions and agree to abide by our rules

## **TRAVELLING TO WOOD FARM**

Wood Farm is situated off Gospel End Road (A463) approx 1 mile from Sedgley Town Centre and approx 1.5 miles from Wombourne

Approaching on the A449, when reaching the Wombourne Island, turn onto the A463 towards Sedgley, after approx 1.5 miles, you will pass the Summerhouse Pub on your left, the entrance to Wood Farm is approx 50 mtrs further on your right past the next set of traffic lights

Approaching from Sedgley, turn onto the A463 in Sedgley Town Centre, after approx 400 mtrs, the Seven Stars pub is on your left, after another 600 mtrs the entrance to Wood Farm is on your left

*If you are in any difficulty finding us please ring **07927 059930** and we will try and help you*

**RING 1****SHOWJUMPING****STARTS 10.00am**

All Classes are qualifiers for the Midarc 25th Anniversary Championships  
Entry Fee : Members £7.00 per Class Non members £9.00 per Class

**Clear Round will run from 9.00am - Last entry 10.15am Entry Fee £2**

**Classes will start at 10.30am**

Horses (Over 14.2hh Ridden by Riders 13yrs & over), Ponies (14.2hh & under Ridden by Riders 16yrs and under) will compete together but with separate awards

**CLASS 1 LEAD REIN SHOWJUMPING - Fences approx 18"**

**CLASS 2 55cms (1'9") - No fillers**

**CLASS 3 60cms (2'0")**

**CLASS 4 70cms (2'3")**

**CLASS 5 WOMBOURNE DECORATING SERVICES 75cms (2'6") SHOWJUMPING**  
Kindly sponsored by Wombourne Decorating Services, Painting & Decorating Specialists - Call Lee on 01902 898 183 or 07753 172707

**CLASS 6 CHASE ME CHARLIE**  
Open to all Horses and Ponies, Riders any age. Fences will start at 70cms (2'3") - Special Rosette to all riders clearing 90cms at each show  
There will be a special prize at the end of season awards for the highest height recorded by a winner over the season

**CLASS 7 80cms (2'9")**

**CLASS 8 90cms (3'0")**

The logo for Taylor's Estate Agents features the word "Taylors" in a large, bold, white serif font. The letters are set against a dark grey rectangular background. The 'T' is particularly large and prominent.

We would like to wish the best of luck to all competitors at this years Wombourne Horse Shows

Sedgley : 01902 880888  
2a Dudley Street, Sedgley DY3 1SB  
e: sedgley@taylors-estateagents.co.uk

[www.taylors-estateagents.co.uk](http://www.taylors-estateagents.co.uk)

# Wombourne Decorating Services Ltd

- Painting & Decorating Specialists
- Full House Makeovers
- Paper Hanging
- Design & Estimates
- Fully Insured



**MEMBER**

**Call Lee:**

**01902 898 183 or**

**07753 172 707**

Discounts available for  
multi room orders



Email: [lee@wombournedecorating.co.uk](mailto:lee@wombournedecorating.co.uk)

[www.decoratorwolverhampton.co.uk](http://www.decoratorwolverhampton.co.uk)

**'PUT YOUR HOME IN SAFE HANDS'**

Entry Fee to all Showing Classes - members £7.00 non members £9.00

All Classes in this ring are qualifiers for the Midarc Summer Championships  
Lead Rein Riders must be 8yrs & under on 1st January 2018, Ponies 12.2hh & under  
Junior Riders must be 16yrs & under on 1st January 2018, Ponies 14.2hh & under  
Senior Riders are aged 17yrs & Over on 1st January 2018  
Ponies may be ridden by Adults in specified Classes

Where Classes are open to Horses and Ponies, awards will be made separately  
if numbers warrant and this is at the judges discretion

### NOVICE SHOWING

Novices should be shown in a snaffle bridle, Juniors- no long boots or spurs  
Novices will not be asked to canter collectively, but may in their individual show. If you are not  
ready to canter you will not be penalised if you don't but will be encouraged to try if they wish

- CLASS 9**            **NOVICE RIDDEN EQUITATION**  
Open to Horses and Ponies, Riders of any age  
Judged on a mixture of rider, horse, turnout and short show  
Rider & Horse/Pony not to have won 3 1st prizes in any open ridden class
- CLASS 10**        **NOVICE IN HAND BEST CONDITION**  
Open to all horses / ponies, but to be led by handlers of a suitable age and  
size. Handler & Horse/Pony not to have won 3 1st prizes in any open in hand  
class
- CLASS 11**        **NOVICE JUNIOR BEST RIDER**  
Open to Horses and Ponies, Riders must be 16yrs & under  
Lead Rein Riders must be 8yrs & under  
Rider not to have won 3 1st prizes in any open ridden class
- CLASS 12**        **NOVICE SENIOR BEST RIDER**  
Open to Horses and Ponies, Riders must be 17yrs & over  
Rider not to have won 3 1st prizes in any open ridden class
- CLASS 13**        **NOVICE IN HAND - ANY AGE ANY BREED**  
Open to all horses / ponies, to be led by handlers of a suitable age and size  
Handler not to have won 3 1st prizes in any open in hand class
- CLASS 14**        **BEST RIDDEN LOCAL PONY OR HORSE**  
Open to all horses and ponies, Riders of any age, stabled within 10 miles of  
the showground
- CLASS 15**        **NOVICE IN HAND - MOUNTAIN & MOORLAND**  
open to all breeds, small and large, no stallions allowed, and handlers must be  
of a suitable age and height (eg: no 4 year olds leading a Clydesdale, common  
sense to be used)  
Handler not to have won 3 1st prizes in any open in hand class

- CLASS 16**      **NOVICE PONY**  
 Ponies 14.2hh & under to be ridden by Riders 16yrs & under  
 Lead Rein Riders to be 8 yrs and under  
 Pony not to have won 3 1st prizes in any open ridden class
- CLASS 17**      **NOVICE HORSE**  
 Horses to exceed 14.2hh, Riders 13yrs & over  
 Horse not to have won 3 1st prizes in any open ridden class
- CLASS 18**      **NOVICE IN HAND SHETLAND OR MINITAURE HORSES**  
 Open to all Shetlands and miniature horses, no stallions allowed, and handlers  
 must be of a suitable age and height  
 Handler not to have won 3 1st prizes in any open in hand class
- CLASS 19**      **NOVICE RIDDEN COLOURED AND SPOTTED HORSE OR PONY**  
 Open to all Coloured or Spotted Horses and Ponies  
 Must be ridden by Riders of a suitable size, Lead Rein Riders must be 8yrs &  
 under. Horse / Pony not to have won 3 1st prizes in any open ridden class
- CLASS 20**      **NOVICE IN HAND HANDLER**  
 Open to all horses / ponies, to be led by handlers of a suitable age and size  
 Will be split into Juniors and Seniors if numbers warrant  
 Horse / Pony not to have won 3 1st prizes in any open in hand class
- CLASS 21**      **RIDDEN VETERAN HORSE OR PONY FOR NOVICE RIDERS**  
 Open to all Horses and Ponies aged 16yrs & over  
 Must be ridden by Riders of a suitable size and meet our Novice Criteria  
 Lead Rein Riders must be 8yrs & under  
 Rider not to have won 3 1st prizes in any open ridden class

Following Class 21, those riders placed 1st or 2nd in Classes 9 - 21  
 will come forward to be judged for the

**Wombourne Horse Shows Novice Championship**



*The Tea Cup*

**Outside Catering  
 for your event**

**Tel: 07734 000260**

*Burgers, Bacon, Sausages, Chips, Chicken Nuggets, Drinks  
 Also Buffets catered for starting at £3 per head*

## THE SHOWING REGISTER

Riders can qualify for two championships with a TSR card. Not only can they qualify for a TSR Final they can enter the BSHA Grass Roots Championships in Sep at the BSHA Championship Show, Addington.

**TSR Showing Finals** - This show is a qualifier for the 2018 TSR Showing Finals. Qualify and enter ANY of the Finals Central, East Anglia, North West, North East, South East, South, Wales & South West or Scottish. You Do Not have to be a TSR member to qualify or enter a final. The Rider/Handler qualifies and can enter any horse/pony in any number of Finals!

**TSR Riders Finals** - 1st & 2nd riders qualify and will receive a qualification card in the ring.

**TSR In Hand Finals** - The two highest placed Handlers with a TSR In Hand Card will qualify in any In Hand class. Handlers MUST have their cards signed in the ring by the judge/steward, cards are available FREE from the TSR website. Full details at <http://www.theshowingregister.co.uk/>

**TSR Medal Awards** - TSR members can collect qualification cards & signatures and redeem for a TSR Medal see TSR website for details.

**BSHA Grass Roots Champs** - With a TSR qualification card you can also enter the BSHA Grass Roots Champs in Sept at Addington Equestrian Centre - You do not have to be a BSHA member to qualify or enter the final. See [www.britishshowhorse.org](http://www.britishshowhorse.org)

### RING 3

### OPEN RIDDEN SHOWING

START 10.00AM

Entry Fee to all Showing Classes - members £7.00 non members £9.00

All Classes in this ring are qualifiers for the Midarc Summer Championships  
Lead Rein Riders must be 8yrs & under on 1st January 2018, Ponies 12.2hh & under  
Junior Riders must be 16yrs & under on 1st January 2018, Ponies 14.2hh & under  
Senior Riders are aged 17yrs & Over on 1st January 2018  
Ponies may be ridden by Adults in specified Classes  
Where Classes are open to Horses and Ponies, awards will be made separately  
if numbers warrant and this is at the judges discretion

### CLASS 22

#### LEAD REIN / JUNIOR RIDER

Junior Riders 16yrs & under on 1st January 2018  
Lead Rein Riders 8yrs & under on 1st January 2018,  
Ponies 12.2hh & under Awards will be made separately if numbers warrant

### CLASS 23

#### SENIOR RIDER

Riders must be 17yrs & over on 1st January 2018, and may ride ponies in this class

### CLASS 24

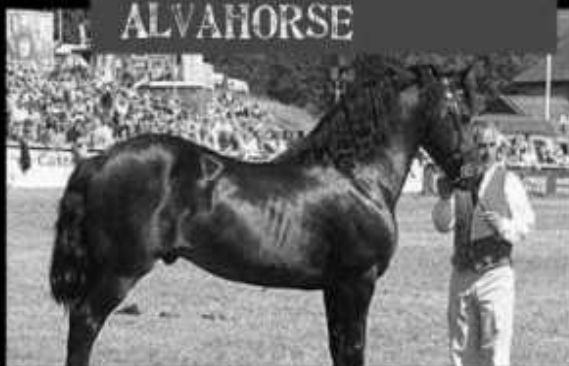
#### LEAD REIN / RIDING PONY

Junior Riders 16yrs & under on 1st January 2018, Ponies 14.2hh & under  
Lead Rein Riders 8yrs & under on 1st January 2018, Ponies 12.2hh & under



Alva Distributor for  
Stafford and  
surrounding areas  
Allison Clements  
07976979569  
AC1 Alvahorse  
On facebook

NATURAL BEAUTY  
ENHANCED BY  
ALVAHORSE



- CLASS 25 MOUNTAIN & MOORLAND - SMALL & LARGE BREEDS**  
 Lead Rein Riders 8yrs & under on 1st January 2018, Ponies 12.2hh & under  
 Junior Riders 16yrs & under on 1st January 2018  
 Senior Riders must be suitable size and weight for the pony they are riding  
 Awards will be made separately if numbers warrant
- CLASS 26 RIDING HORSE**  
 Riders 13yrs & over, Horses exceeding 14.2hh
- CLASS 27 BEST RIDDEN COLOURED / SPOTTED HORSE OR PONY**  
 Junior Riders 16yrs & under on 1st January 2018, Ponies 14.2hh & under  
 Lead Rein Riders 8yrs & under on 1st January 2018, Ponies 12.2hh & under  
 Senior Riders must be 17yrs & over on 1st January 2018, and may ride ponies  
 in this class. This class is also open to Duns, Palominos etc  
 Awards will be made separately if numbers warrant
- CLASS 28 RIDDEN HUNTER**  
 Riders 13yrs & over, Horses exceeding 14.2hh
- CLASS 29 BEST RIDDEN VETERAN HORSE OR PONY**  
 Junior Riders 16yrs & under on 1st January 2018, Ponies 14.2hh & under  
 Lead Rein Riders 8yrs & under on 1st January 2018, Ponies 12.2hh & under  
 Senior Riders must be 17yrs & over on 1st January 2018, and may ride ponies  
 in this class. Awards will be made separately if numbers warrant

After Class 29 Judges will break for lunch

28th April - VHS Qualifiers - Classes A1 - A7 will start approx 30 mins after Class 29

27th July - TGCA Qualifiers - Classes A1 - A5 will start approx 30 mins after Class 29

**BLACK COUNTRY  
 SIGNS & GRAPHICS**

VEHICLE GRAPHICS, CUSTOM REFLECTIVES AND CHEVRONS TO SUIT  
 FOR A FREE QUOTE CALL:

**0 7 7 0 7 0 6 5 3 1 8**

EMAIL: [INFO@BLACKCOUNTRYSIGNSANDGRAPHICS.CO.UK](mailto:INFO@BLACKCOUNTRYSIGNSANDGRAPHICS.CO.UK)

**APRIL 29TH ONLY - Veteran Horse Society - AREA QUALIFIER 2018**

First round qualifier for the Veteran Horse Society Supreme Final:

**VETERAN HORSE OF THE YEAR 2018**

Kindly Sponsored by Allen & Page.

Open to members and non-members. All competitors and grooms must adhere to VHS Rules in all circumstances. Failure to do so may result in immediate disqualification.

VHS Regional Final qualification. All competitors placed 1st to 4th in each Area Qualifier class will qualify for the corresponding class at VHS Regional Finals.

Members must carry their card in the ring at all times and have their showing card signed by the judge as proof of qualification. Non-members will receive a red qualification card which can be exchanged for signed showing card when applying for VHS membership.

It is the competitors responsibility to present their Showing card to the judge.

Regional Finals are open to members only.

All competitors are eligible to enter open classes at the National Veteran Championships, date to be confirmed. No qualification or membership necessary.

See VHS website for schedule.

For further information please visit the VHS website [www.veteran-horse-society.co.uk](http://www.veteran-horse-society.co.uk) or telephone the VHS Show Office on 01239 881300 or 07789 514004.

- CLASS A1**      **DIAMOND VETERAN IN-HAND (25 years and over).**  
Open to horses and ponies of any breed and height.
- CLASS A2**      **VETERAN IN-HAND (20-24 years).**  
Open to horses and ponies of any breed and height.
- CLASS A3**      **PRE-VETERAN IN-HAND (15-19 years).**  
Open to horses and ponies of any breed and height.
- CLASS A4**      **DIAMOND VETERAN RIDDEN (25 years and over).**  
Open to horses and ponies of any breed and height.
- CLASS A5**      **VETERAN RIDDEN (20-24 years).**  
Open to horses and ponies of any breed and height.
- CLASS A6**      **PRE-VETERAN RIDDEN (15-19 years).**  
Open to horses and ponies of any breed and height.
- CLASS A7**      **MOUNTAIN & MOORLAND COMBINED AGE CLASS**  
Ridden (15 years and Over) To be run as one class but judged as separate age categories  
Qualification to the Regional Final in relevant age category:  
In-hand (15 years and Over) To be run as one class but judged as separate age categories.  
Qualification to the Regional Final in relevant age category

**APRIL 29TH ONLY**

Those placed 1st or 2nd in Classes A1 - A7 are invited to come forward for the VHS Section Championship

# MIDARC 25TH ANNIVERSARY CHAMPIONSHIPS

Saturday 1st September at Wood Farm, Gospel End Road, Sedgley DY3 4HA



*Our 2017 Midarc Champion pictured above*

2018 Championship details are on our web site [www.midarc.co.uk](http://www.midarc.co.uk)  
Register on line at the web site Championship Page  
Visit the Show Diary over 200 show dates from March - October



Experienced Mechanics with Competitive Prices

**Tel: 01902 665756**

[sedgleyautocentre@hotmail.co.uk](mailto:sedgleyautocentre@hotmail.co.uk)

Gospel End Road, Sedgley, Dudley DY3 3LT

*Diesels & Petrols - Most makes and models*

**SERVICING ● MOT TESTING ● CLUTCHES  
TYRES ● TRACKING ● MECHANICAL WORK**



## THE TRADITIONAL GYPSY COB ASSOCIATION

### TOYS Qualifiers - 27th July 2018

Show Number TGCA/07/18/050 - this number must be written on your qualifying card

You have 21 days from date of qualifying to join the TGCA in order to compete at the TOYS Championships

These Classes will start immediately after lunch and not before 1.00pm

**CLASS A1**            **TGCA YOUNGSTOCK**

**CLASS A2**            **TGCA SENIOR** - not to exceed 148cms

**CLASS A3**            **TGCA SENIOR** - 148cms and above

**CLASS A4**            **TGCA RIDDEN** - not to exceed 148cms

**CLASS A5**            **TGCA RIDDEN** - 148cms and above

The Highest placed junior riders in the ridden classes will qualify for the Junior Ridden Finals

### **APRIL 29TH ONLY**

Those placed 1st or 2nd in Classes A1 - A5 are invited to come forward for the

On 29th April and 27th July - Class 30 will commence at the end of the qualifying classes

**CLASS 30**            **\*\*\*\* MINI WORKING HUNTER\*\*\*\* NEW FOR 2018**

An introduction to working Hunter, fences will be set at 60cms, approx 3 -4 fences. They may be lowered or raised to suit each riders abilities  
Open to Horses and Ponies, Riders to be of a suitable age and height

**CLASS 31**            **TAYLORS OF SEDGLEY RIDDEN COB**

Open to all Cobs - Show and Traditional, Riders 13yrs & over  
Kindly sponsored by Taylors of Sedgley, your local estate agent  
Telephone: 01902 880888

**CLASS 32**            **HORSE OR PONY OF RIDING CLUB / PONY CLUB TYPE**

Competitors will be expected to jump 3 or 4 small jumps, They may be lowered or raised to suit each riders abilities  
Open to Horses and Ponies, Riders to be of a suitable age and height

**CLASS 33**            **RIDDEN MARE - includes Lead Rein**

Open to all Riders on Horses or Ponies - obviously mares  
Lead Rein Riders 8yrs & under on 1st January 2018, Ponies 12.2hh & under  
Junior Riders 16yrs & under on 1st January 2018, Ponies 14.2hh & under  
Senior Riders 17yrs & over on 1st January 2018, and may ride ponies in this class

**CLASS 34**            **RIDDEN GELDING - includes Lead Rein**

Open to all Riders on Horses or Ponies - obviously geldings  
Lead Rein Riders 8yrs & under on 1st January 2018, Ponies 12.2hh & under  
Junior Riders 16yrs & under on 1st January 2018, Ponies 14.2hh & under  
Senior Riders must be 17yrs & over on 1st January 2018, and may

Following Class 34, those Lead Rein riders placed 1st or 2nd in Classes 22 - 34  
will come forward to be judged for the

**Wombourne Horse Shows Open Lead Rein Ridden Championship**

Following Class 34, those Junior riders placed 1st or 2nd in Classes 22 - 34  
will come forward to be judged for the

**Wombourne Horse Shows Open Junior Ridden Championship**

Following Class 34, those Senior riders placed 1st or 2nd in Classes 22 - 34  
will come forward to be judged for the

**Wombourne Horse Shows Open Senior Ridden Championship**

**RING 4                    IN HAND SHOWING - OPEN CLASSES                    START 10.00am**

Entry Fee to all Showing Classes - members £7.00    non members £9.00

Handlers aged 16yrs & under must wear Hard Hats

All Classes in this ring are qualifiers for the Midarc Summer Championships

Please allow 20 minutes per class

**CLASS 35                    OPEN IN HAND BEST CONDITION**

To be judged on turnout and condition

**CLASS 36                    BEST WELSH BREEDS**

Open to Welsh breeds, any age

**CLASS 37                    BEST ANY OTHER BREEDS YOUNGSTOCK**

Open to all breeds 3yrs & under, except Welsh

**CLASS 38                    BEST ANY OTHER BREEDS MATURE**

Open to all breeds 4yrs & over except Welsh

**CLASS 39                    BEST SHETLAND & MINIATURE HORSE**

Open to Shetlands & Miniatures of any age

**CLASS 40                    BEST VETERAN**

Open to all Horses & ponies aged 15yrs & over

**CLASS 41                    BEST DRIVING TYPE**

Not to be shown in Harness

Judges will now take lunch, Class 41 will start approx 30 minutes after the end of Class 40

**CLASS 42                    BEST COLOURED & SPOTTED**

Open to Horses & Ponies

**CLASS 43                    BEST MOUNTAIN & MOORLAND**

Open to all M&M breeds, native & foreign

**CLASS 44                    BEST FOREIGN BREEDS**

Open to all breeds not native to the UK

**CLASS 45                    BEST GELDING**

# Spotless Window Cleaning



Spotless window cleaning offers you the very best of modern day window cleaning as my system is 100% pure water which is purified through de-ionisation vessels which is then pumped through my long reach pole & brush system to give you a high quality clean and spot free window and at the same time cleans your UPVC frames and sills without having to use the old fashioned ladders and sponge.

My system is much safer and quicker, PLUS my service is 100% reliable and friendly with very competitive prices

so call for a free quote on:



: 07908138120

ALSO GUTTER AND  
FACIA BOARD  
CLEANING AND  
SILVER SAND CLEANING

- CLASS 46**      **BEST MARE**  
Open to Horses & Ponies
- CLASS 47**      **BEST COB**  
Traditional or Show Type, any age
- CLASS 48**      **SHOW HANDLER**  
Open to handlers of any age, awards will be split Lead Rein, Junior and Senior if numbers warrant

Following this class, the first two placed in Classes 35 - 48 will be invited to come forward to be Judged for the **IN HAND CHAMPION** of the day

### **END OF THE DAY CHAMPIONSHIPS**

#### **SUPREME SHOWING CHAMPION**

The Champions and Reserves from Rings 2, 3 and 4 will be invited to come forward to be

Judged for the **SUPREME SHOWING CHAMPION** of the day  
The Supreme Champion will receive a Sash and Championship Rosette

#### **RING 5**      **DRESSAGE**

Entry Fee to all Dressage Tests - members £10.00    non members £12.00

All Classes in this ring are qualifiers for the Midarc Championships - All Tests may be called

- CLASS 49**      **BD INTRO**  
29TH April - Intro A, 28th May - Intro B, 17th June - Intro C, 15th July Intro - B  
29th July - Intro A, 12th August - Intro C, 27th August - Intro B  
Dress Code will be relaxed      Lead Rein Riders very welcome

- CLASS 50**      **INTRO TO PRELIM DRESSAGE**  
Rider and Horse or Pony combination not to have achieved a 60% dressage score in any Prelim or Novice Dressage Test up to and including 1st April 2018  
29th April, 15th July, 27th August - Prelim 7  
28th May, 29th July - Prelim 1,    17th June, 12th August - Prelim 2

- CLASS 51**      **PRELIM DRESSAGE**  
29th April, 17th June, 29th July, 27th August    - Prelim 13  
28th May, 15th July, 12th August      - Prelim 18

Entries for Dressage Tests will close at 5pm on the Thursday preceding the show  
Dressage Tests may be entered on line at [www.midarc.co.uk/wombourne.htm](http://www.midarc.co.uk/wombourne.htm)  
Dressage Tests may also be entered by post, and should be sent with the correct remittance and please enclose a contact telephone number to

**1, Ivy Cottages, Penncroft Lane, Wolverhampton WV4 5JW**

Dressage Times will be listed on the Midarc web site and Wombourne Facebook Page  
Those entering on line will be emailed their times on the Friday preceding the show  
You may ring for your times between 7pm - 9pm on the Friday preceding the show





## ***Its back - its Gymkhana Time***



*Yes, folks, after a break of 3 years, the Gymkhana is back, its time for the kids of all ages to have some fun.*

Organised and run by Jo Hunt and her band of trusty helpers on each show day, the gymkhana will be starting at approx 2pm, and there will be 5 gymkhana races from a selection of: Walk & Trot, Bending, Egg & Spoon, Flags, Cups, Targets, Sack and Light Bulbs plus a surprise race depending on the weather (sounds like riders may be getting wet, so bring a towel)  
Races to be decided on the day

### **Age Groups**

- a) 8 yrs & under on the Lead Rein
- b) Open - 12yrs & under
- c) Open - exceeding 12yrs up to very old people eg: parents

Entry Fee is £7.50 for all 5 races or £2 per race      Rosettes to 4th place in each race  
Trophy to overall winner of each Age Group

***Kids, does your mum look like this  
on board your pony, then enter her in the  
Open Section of the Gymkhana.***

***If the overall winner of the Open Section  
is over 18 then we will swop their  
trophy for a bottle of Fizz***



## EVENING SHOW - WEDNESDAY 30TH MAY

### **RING 1                      SHOWJUMPING                      STARTS 5.00PM**

All Classes are qualifiers for the Midarc 25th Anniversary Championships  
Entry Fee : Members £7.00 per Class                      Non members £9.00 per Class

Clear Round will run from 5pm until 6pm    Entry Fee £2                      Classes will start at 6.00pm

Horses (Over 14.2hh Ridden by Riders 13yrs & over), Ponies (14.2hh & under Ridden by Riders 16yrs and under) will compete together but with separate awards

- CLASS 1                      55cms (1'9")**
- CLASS 2                      60cms (2'0")**
- CLASS 3                      70cms (2'3")**
- CLASS 4                      75cms (2'6")**
- CLASS 5                      80cms (2'9") - Time and light permitting**

### **RING 2                      DRESSAGE                      STARTS 5.00pm**

Entry Fee to all Dressage Tests - members £10.00    non members £12.00  
All Classes in this ring are qualifiers for the Midarc Championships

- CLASS 6                      BD INTRO A**  
This class is intended for those in their first year trying Dressage  
Dress Code will be relaxed                      Lead Rein Riders very welcome

#### **CLASS 7                      BD INTRO C**

- CLASS 8                      INTRO TO PRELIM DRESSAGE - Prelim 7**  
Rider and Horse or Pony combination not to have achieved a 50% dressage score in any Prelim or novice Dressage Test up to and including 1st April 2018

Entries for Dressage Tests will close at 5pm on the Monday preceding the show  
Dressage Tests may be entered on line at [www.midarc.co.uk/wombourne.htm](http://www.midarc.co.uk/wombourne.htm)  
Dressage Tests may also be entered by post, and should be sent with the correct remittance and please enclose a contact telephone number to

**1, Ivy Cottages, Penncroft Lane, Wolverhampton WV4 5JW**

Dressage Times will be listed on the Midarc web site and Wombourne Facebook Page

Those entering on line will be emailed their times on the Friday preceding the show

You may ring for your times between 7pm - 9pm on the Monday preceding the show

**01902 677593**

# **FUN DOG SHOWS**

Monday 28th May, Sunday 17th June, Sundays 15th July, 29th July,  
12th August, Bank Holiday Monday 27th August

**Wood Farm, Gospel End Road, Sedgley DY3 4HA**

Raising funds to help Dog Rescue Organisations

Starts at 12 pm                      Entries taken on the ring side

This fun dog show is taking place at the monthly horse shows at Wood Farm  
and organised by Midland Association of Riding Clubs

**Telephone: 01902 677593**

**e-mail: [Midarc@hotmail.co.uk](mailto:Midarc@hotmail.co.uk)**

There will be rosettes to 4th place and prizes in kind

- |                |                           |
|----------------|---------------------------|
| <b>Class 1</b> | <b>Working / Pastoral</b> |
| <b>Class 2</b> | <b>Terrier / Hound</b>    |
| <b>Class 3</b> | <b>Utility / Toy</b>      |
| <b>Class 4</b> | <b>Gun Dog</b>            |

## **NOVELTY CLASSES**

- |                 |   |
|-----------------|---|
| <b>Class 5</b>  | <b>Junior Handler 16years and under</b>   |
| <b>Class 6</b>  | <b>Best Crossbreed</b>                    |
| <b>Class 7</b>  | <b>Best Long Coat</b>                     |
| <b>Class 8</b>  | <b>Best Short Coat</b>                    |
| <b>Class 9</b>  | <b>Best Wire or Rough Coat</b>            |
| <b>Class 10</b> | <b>Best Puppy 6-12 months</b>             |
| <b>Class 11</b> | <b>Best Veteran over 7 years</b>          |
| <b>Class 12</b> | <b>Handsomest Dog</b>                     |
| <b>Class 13</b> | <b>Prettiest Bitch</b>                    |
| <b>Class 14</b> | <b>Best Condition</b>                     |
| <b>Class 15</b> | <b>Best Movement</b>                      |
| <b>Class 16</b> | <b>Dog with waggiest tail</b>             |
| <b>Class 17</b> | <b>Best Brace (matched or mismatched)</b> |
| <b>Class 18</b> | <b>Best Rescue</b>                        |

**All winners from classes 1 - 18 will now be judged for our Champion of the Day**

Entry Fees £2 for first class then £1.50 for each class thereafter

For 2018 we are running a dog show membership at £6 per handler, this will entitle you to 50p off per entry. Dog Show members will get points in their classes and at the end of the season those with the most points will win the end of season award, these will be made at our awards evening on Saturday 20th October at Wombourne Civic Centre

If you cannot attend and want to make a donation, you can do this via our paypal account  
[sandyslegacy@hotmail.com](mailto:sandyslegacy@hotmail.com)

# KV

**PLANT & MACHINERY**

**07926 795745 • 07936 826013**

TREE WORKS BLOCK PAVING LANDSCAPING GROUNDWORKS

**DIGGER FOR HIRE**